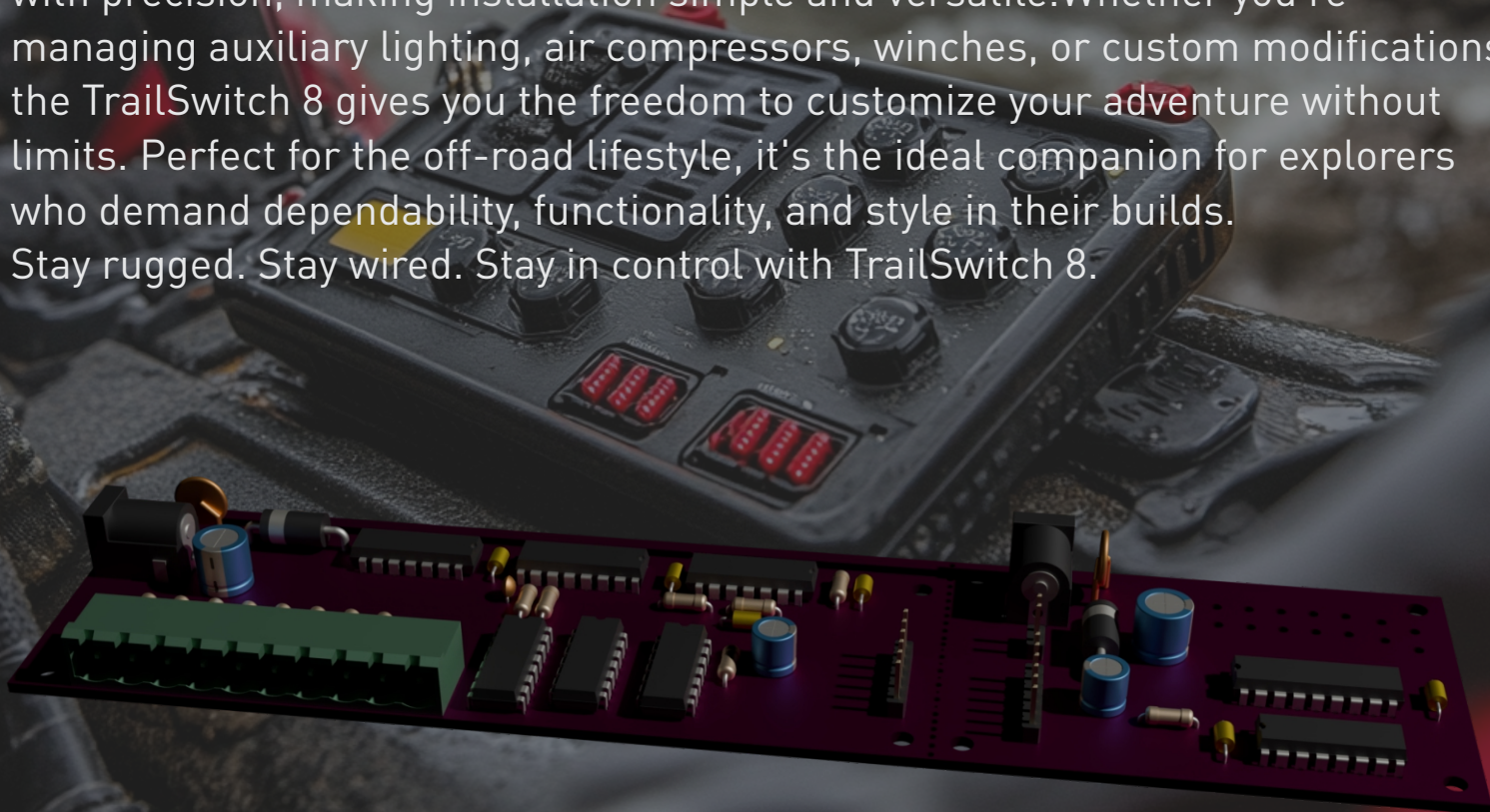




***TAKE CONTROL ANYWHERE. BUILT FOR THE WILD.***

The TrailSwitch 8, the ultimate wired 8-channel switch system designed for off-road enthusiasts and adventurers looking to take their 4x4 rigs to the next level. Say goodbye to unreliable wireless systems that succumb to engine EMF noise—this robust, hardwired solution ensures flawless performance, no matter how rugged the terrain or challenging the conditions.

This powerful system combines rugged reliability with cutting-edge CMOS digital signaling to give you seamless control over your rig's accessories and house battery setups. The modular switch board is designed for easy integration with your custom switch setup, while the relay control board triggers relay coils with precision, making installation simple and versatile. Whether you're managing auxiliary lighting, air compressors, winches, or custom modifications, the TrailSwitch 8 gives you the freedom to customize your adventure without limits. Perfect for the off-road lifestyle, it's the ideal companion for explorers who demand dependability, functionality, and style in their builds. Stay rugged. Stay wired. Stay in control with TrailSwitch 8.

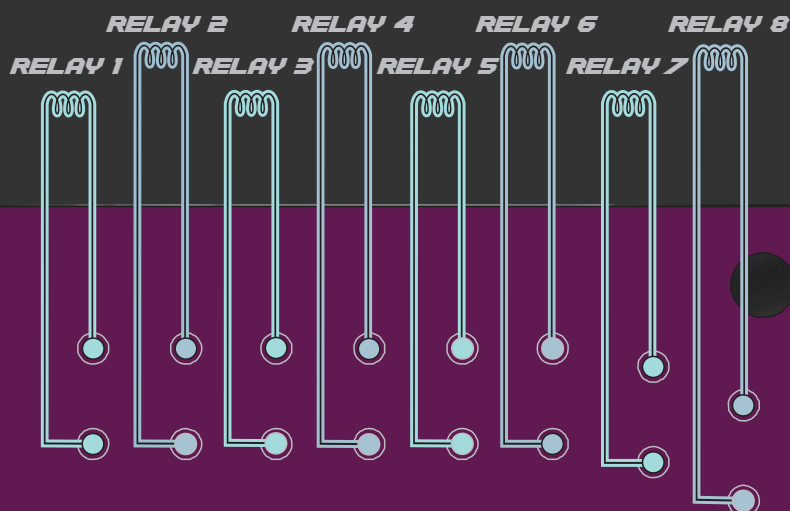




# TRAIL SWITCH 8

MudRut  
Beast

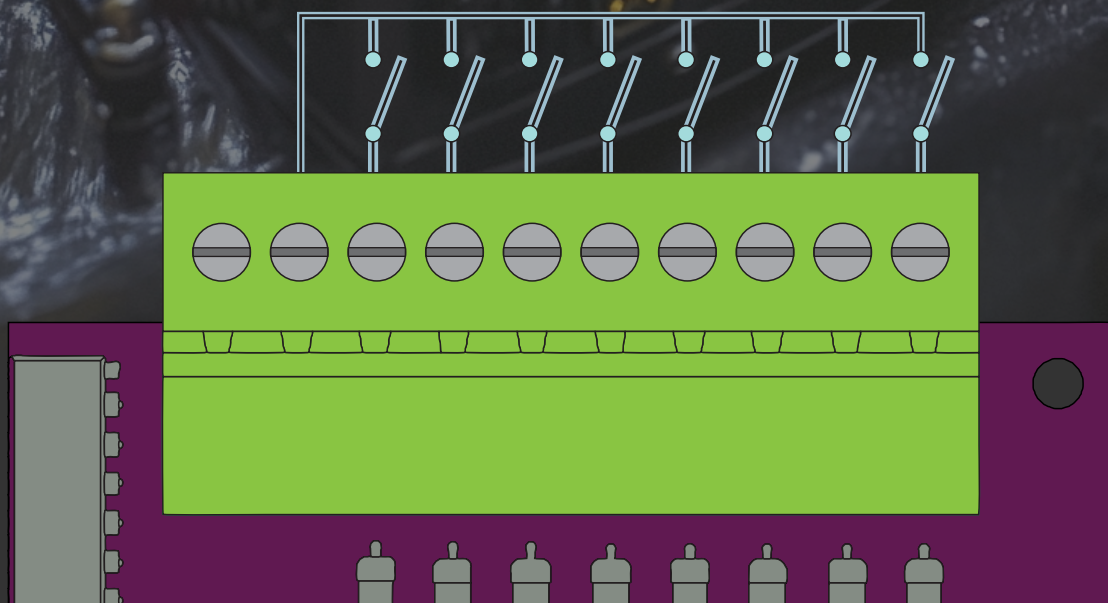
POWER 12V



Adding accessories like lights, winches, or auxiliary systems to your vehicle often means running multiple wires through the firewall—creating a cluttered mess and unnecessary complexity. The Trail Switch 8 eliminates this hassle by allowing you to control up to 8 relay circuits with a single streamlined cable passing through the firewall.

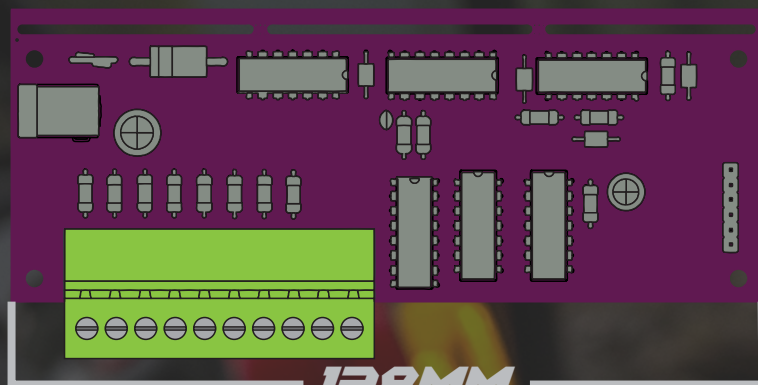
Designed for simplicity and efficiency, the Trail Switch 8 provides seamless cabin-to-engine bay control, reducing bulk and improving installation ease. Say goodbye to tangled wiring and hello to a clean, reliable solution built for off-road and automotive enthusiasts who demand performance without compromise. who demand dependability, functionality, and style in their builds. Stay rugged. Stay wired. Stay in control with TrailSwitch 8.

SWITCH 1 - 8



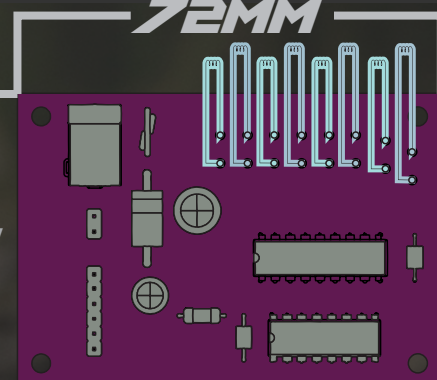
### TECH SPECS

#### SWITCH BOARD INPUT BOARD



#### 72MM

#### RELAY BOARD OUTPUT BOARD



- Operating voltage - 6vDC to 18vDC optional supply on switch or relay board.
- Stand by current, 15mA. relay board and switch board combined.
  - Relay board - 3mA
  - Switch board - 12mA
- Switch Board is reverse polarity protected and has a thermally resetting fuse at 500mA/900mA trip.
- Relay Board is reverse polarity protected and has a thermally resetting fuse at 1A/1.8A trip.
- Relay outputs are able to drive 200mA each.
- Diode protection for switching inductive loads on each output.
- Tested to 50 meters of cable between switchboard and relay board.(@12v)
- Can be used to extend I/O function in common IC circuits.

### **WARNING:**

Not yet tested for thermal operational conditions.

- The output IC does not include built-in protection circuits for excess current or overvoltage.
- Utmost care is necessary since the IC may be destroyed due to short-circuit between outputs, or fault by improper grounding.

Switchboard inputs switch to ground to activate. Led or light up switches do not need a resistor but can be wired in series with the switch.